

The Toilet Roll Holder

Instruction Manual



INVISIBLE®
CREATIONS

hello@invisiblecreations.co.uk

01942 206 004 | invisiblecreations.co.uk



@inviscreations

The Toilet Roll Holder - Instruction Manual

Instructions

1. Mark out the mounting positions on a suitable surface
2. Do not install into plasterboard unless it is reinforced
3. Drill holes to suit wall fixings (Not supplied)
4. Ensure the product is safe to use.

General safety warning:

Please ensure these instructions are fully read and implemented. Failure to do so may result in injury to the user. Retain in a safe place for future reference. The product must be installed by a competent professional onto a surface that is deemed suitable.

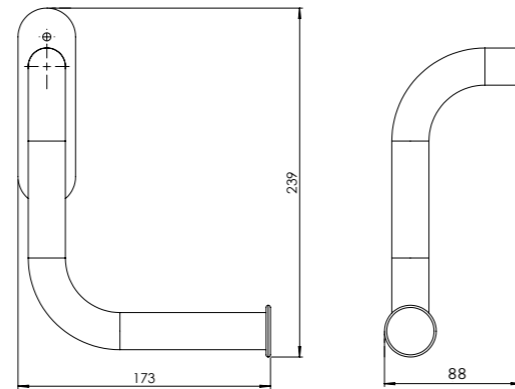
Should you see any damage during unpacking or suspect a fault, do not install the product and contact your supplier immediately.

Products have been tested to a load of 160kg for 60 seconds in accordance with BS ISO 17966:2016 on a suitable surface.

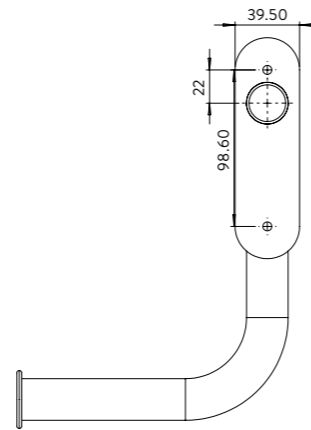
Disclaimers, Installation and further safety information:

1. This product must be correctly assembled, installed, and maintained.
2. If installing the product in a showering or bathing area it may need to be earthed to conform with IEE Wiring regulations for metallic components within bathrooms. Consult a suitably qualified person prior to installation.
3. Support rails can be slippery when wet – use this product with caution.
4. It is recommended that this product is installed by a suitably qualified, competent person.
5. Only install the product in an area where the mounting surface is structurally sound. (Strengthening modifications to the fixing surface may be required.)
6. This product must be secured to the wall using fasteners which are appropriate to the structural base material.
7. Waterproofing is recommended and all fixings used should be none rusting. Sealant should be applied around the wall contact points for any products mounted in a shower. If not properly sealed, there is the potential for water ingress. This may cause the wood to rot, compromising the structure and safety of the support rail.
8. DO NOT install in fibreglass / acrylic shower enclosures with insufficient stiffness and strength. The maximum rated load of this product is 100kg based on the product being fitted to a suitable surface using appropriate fixings in accordance with BS ISO 17966:2016.
9. Any screw caps that are used must be securely fixed so that they cannot be removed during normal usage.

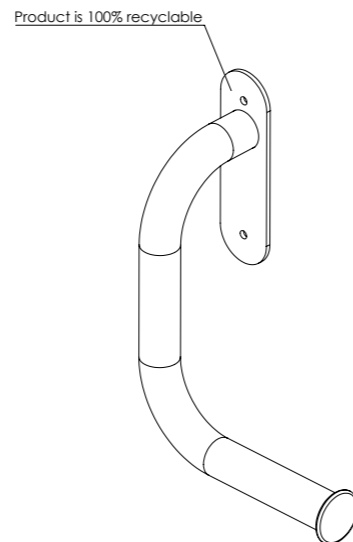
Simplified product dimensions



Wall fixing locations



Additional visual and recycling info



Fitting Guide

We know each person is different and that there isn't a one size fits all solution for the placement of adaptations. Where possible, we'd advise working with an OT or trusted assessor to assist with the best placements for our products based on the needs of the user.

However, we are trying to support organisations to provide adaptations as a preventative measure, and in some cases this means installing products into new build developments or within void refurbishments where an assessment isn't possible.

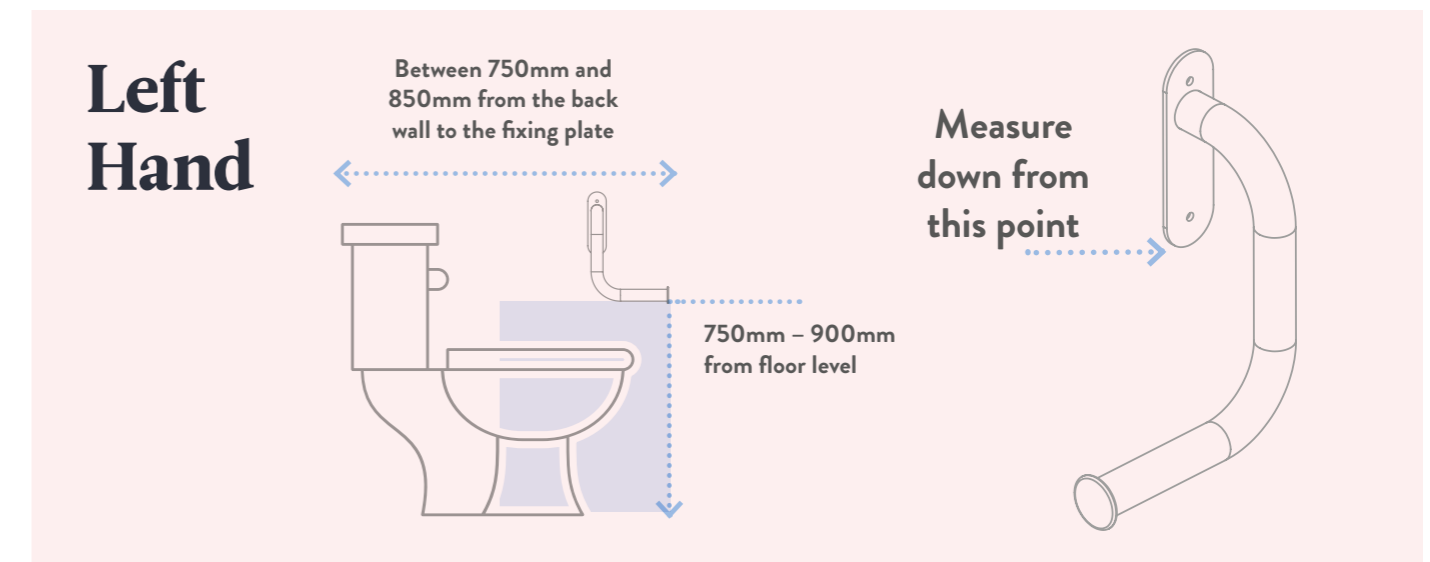
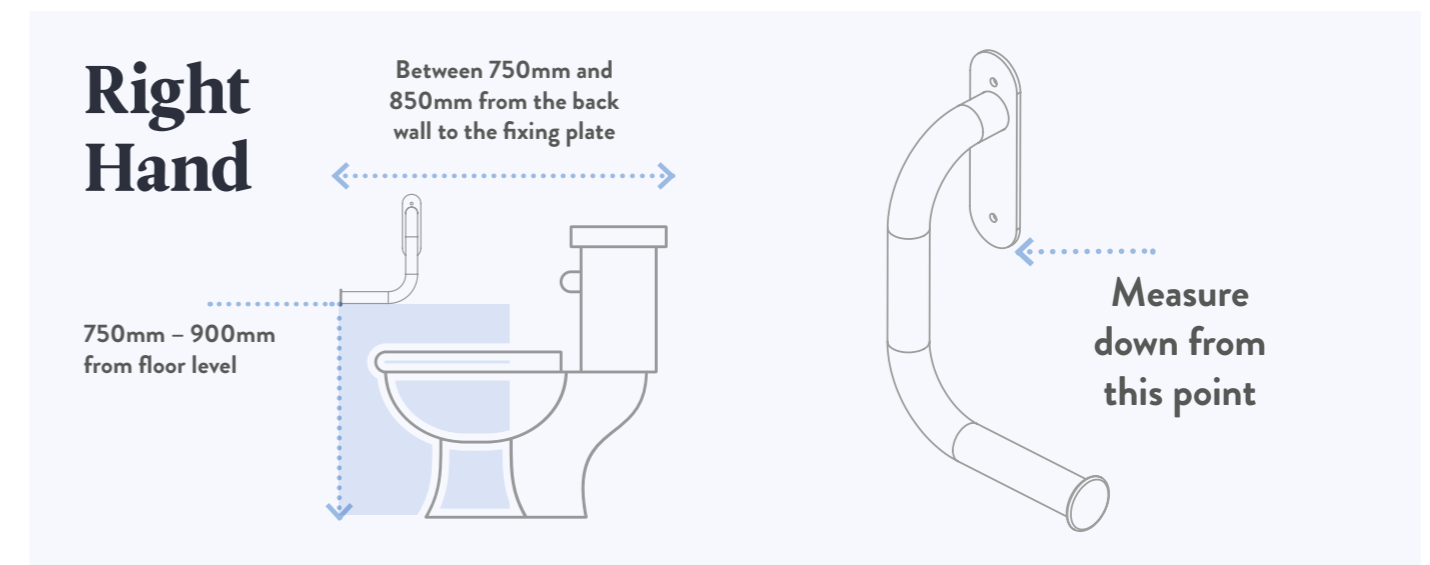
Our toilet roll holder is designed to fit on the adjacent wall, next to the toilet. If the toilet isn't next to an appropriate wall, we wouldn't advise using our product.

We've estimated that when sitting on a 420mm toilet, the product should be fitted between 750mm – 900mm from the floor.

To support these methods of installation, we worked with our in-house OT to provide guidelines for both height of adaptation and effectiveness of use.

The height of the product was tested against someone of 4'2", 5'4" and 6' to give an appropriate height to suit the majority of those moving into these properties.

The measurement should begin from the bottom of the fixing plate.



*Please note that all product measurements in this document are displayed in millimetres (mm)

Get in touch



INVISIBLE®
CREATIONS

hello@invisiblecreations.co.uk

01942 206 004 | invisiblecreations.co.uk



@inviscreations